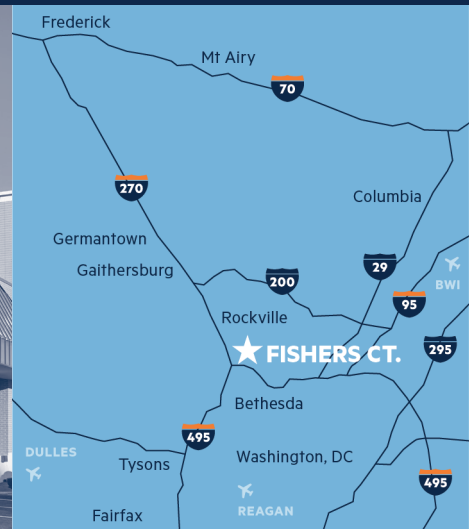


# FISHERS COURT

12712 ROCK CREEK MILL ROAD



**ROCKVILLE, MD** | OVER 60,000 SF IN 2 BUILDINGS

## DIVERSE TENANT BASE

Industrial retail, wet-lab, general warehousing, light manufacturing and distribution. The center has a mix of dock-high and drive-in loading options.

## CONVENIENT LOCATION

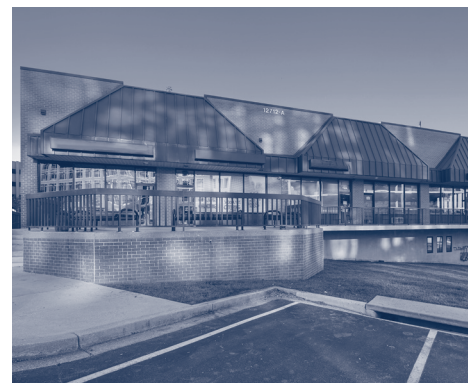
Just off Twinbrook Parkway at Fishers Lane and walkable to the Twinbrook Metro Station. Less than 5 miles from I-270.

## MAJOR EMPLOYES

Surrounded by five government entities to include: Food & Drug Administration (FDA), National Institutes of Health (NIH), U.S. Pharmacopeia (USP), U.S. Department of Health & Human Services (HHS) and National Institute of Allergy and Infectious Disease (NIAID).

## ABUNDANT AMENITIES

Abundant retail and lifestyle amenities within walking distance in and around Twinbrook Metro Plaza and Rockville Pike/Rt. 355.



*Minkoff*

240.912.0200 | [minkoffdev.com](http://minkoffdev.com)

REAL ESTATE  
PERSONAL PERSPECTIVE